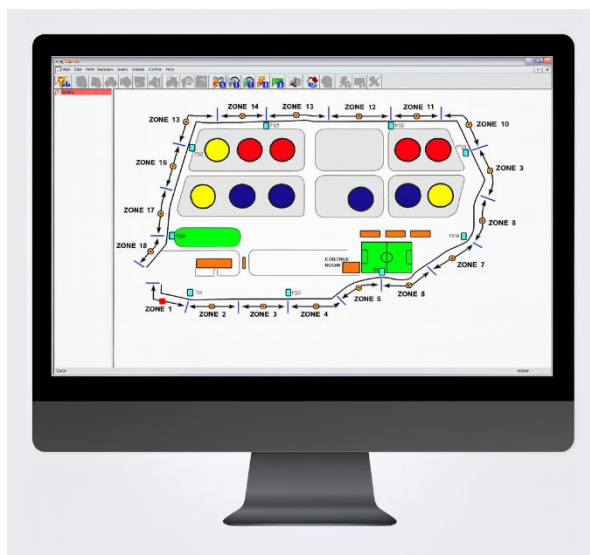


PSF Perimeter Security Management Software



Overview

PSF Perimeter Security Management Software is a modular, PC-based platform designed for centralized monitoring and control of Persec PSF Smart Electric Fence systems. It provides real-time supervision of fence voltage, zone status, alarm events, and auxiliary devices, giving operators a clear and actionable view of the entire perimeter.

PSF Software is suitable for small, medium, and large-scale sites, including critical infrastructure, industrial facilities, logistics centers, and high-security compounds. Its scalable architecture supports standalone control rooms as well as multi-workstation, distributed deployments.

Applications

Suitable for small facilities to large critical-infrastructure sites, including:

- ✓ High-security compounds, prisons, and correctional facilities
- ✓ Power plants, substations, and transmission yards
- ✓ Oil, gas, and petrochemical facilities
- ✓ Warehouses, logistics hubs, and industrial plants
- ✓ Airports, ports, and critical infrastructure sites
- ✓ Buildings with security requirements

Key Features

✓ All-in-one monitoring interface

- Unified environment for all PSF controllers, zones, and alarm devices
- Centralized configuration, monitoring, and reporting

✓ Zone-based visualization on maps

- The perimeter logically divided into multiple zones
- Site maps showing all fence lines, zones, and key devices
- Color-coded status (normal, alarm, fault, maintenance)
- Zoomable maps and sub-maps for large or complex perimeters

✓ Real-time fence status and control

- Live display of fence voltage and operating mode per zone
- Remote control of fence sections (ON/OFF, power level, operating profiles)
- Support for multi-zone energizers and segmented fence architecture

✓ Advanced alarm handling

- Real-time alarm windows with zone, time, and event type
- “Acknowledge” and “Reset” procedures for operator response
- Priority handling when multiple alarms take place simultaneously
- Alarm history database with search, filters, export, and printable reports

✓ Alarm Control Units (ACUs)

- Each ACU with 8 inputs and 8 programmable outputs
- Outputs can be grouped (sirens, projectors, warning lights, PA, etc.)
- Timed outputs for automatic activation and deactivation
- Flexible logic for linking fence alarms to external devices

✓ User and security management

- Multi-level user access with configurable permissions
- Operator roles (administrator, supervisor, guard, maintenance, etc.)
- Event logging for operator actions and critical system changes

System Integration and Architecture

✓ Open Communication

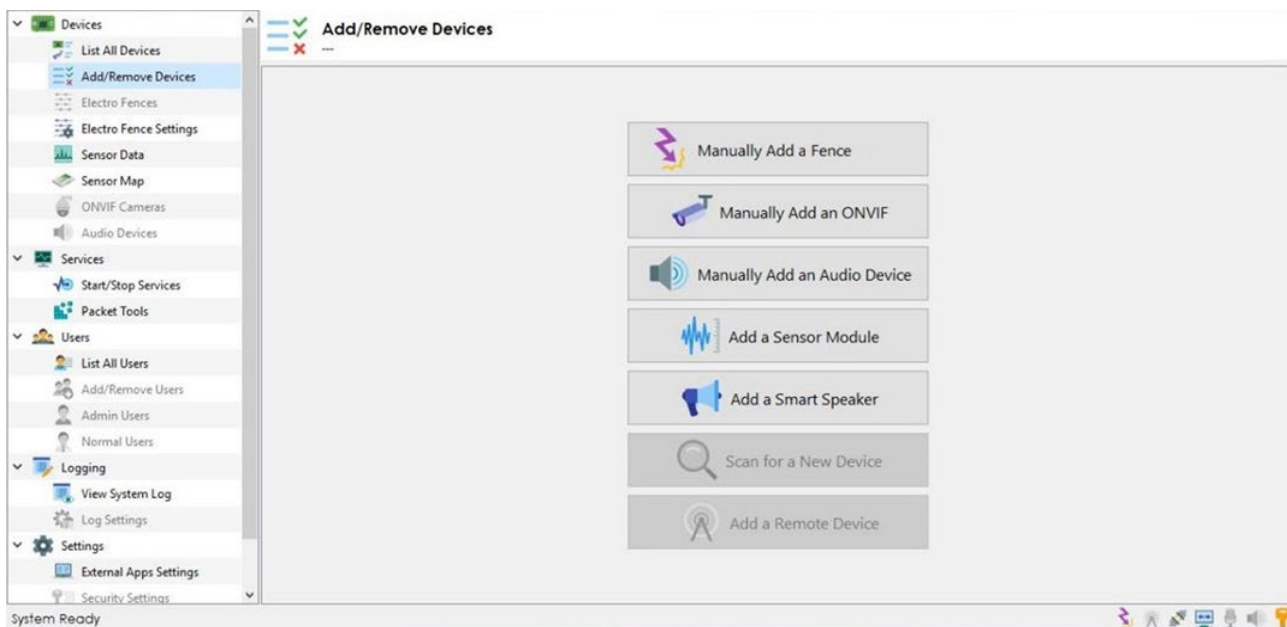
- TCP/IP and RS-485 communication with PSF controllers and ACUs Connection
- Standardized protocol for reliable data exchange and supervision

✓ Flexible topologies

- Standalone: single PC and local network of devices
- Distributed: several controllers across large perimeters connected over LAN/WAN
- Centralized: multiple sites reporting back to a one control room

✓ Integration with third-party systems

- Integration via dry-contact inputs/outputs for external alarm systems with other security devices and systems like CCTV cameras, sensors, access control systems
- Can trigger CCTV recording, horn sound, area lighting, or access control actions



Technical Summary

- ✓ Platform: PC-based management software (Windows environment)
- ✓ Communication: TCP/IP, RS-485
- ✓ Supported devices: PSM microphonic analyzers, Alarm Control Modules (ACMs), I/O devices, CCTV cameras, access control
- ✓ Zones: Multi-zone; supports numerous microphonic zones per site
- ✓ Core functions:
 - Map-based zone visualization
 - Sensitivity and threshold configuration per zone
 - Alarm handling, logging, and reporting
 - I/O management and automation
 - User and operator management

Highlights

- ✓ All-in-one platform: Central software for all PSM microphonic cable devices and related alarms
- ✓ High detection performance: Proper tuning tools to minimize false alarms while maintaining high sensitivity
- ✓ Flexible deployment: Works from simple single-site systems to complex multi-site networks
- ✓ Operator efficiency: Clear visual interface and structured alarm workflows
- ✓ Better analysis: Historical alarm and event reports support security optimization and maintenance planning



Address: 151 Yonge Street, Suite 1500
Toronto, ON M5C 2W7
Canada

Tel: +1-416 371 2275

Website: www.persec.co

LinkedIn: www.linkedin.com/company/persec-technologies