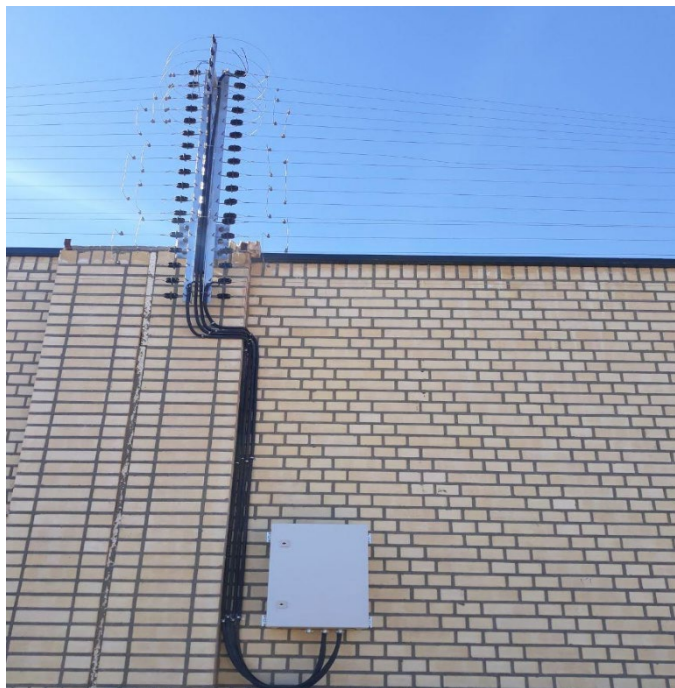


PSF SERIES

ELECTRIC FENCE INTRUSION DETECTION



Overview

The PSF Series Smart Electric Fence is an advanced perimeter protection solution that combines physical deterrence with intelligent electronic monitoring. The system delivers controlled, non-lethal high-voltage pulses to deter intruders while providing continuous zone-based supervision and real-time alarm reporting. Engineered for both industrial and non-industrial infrastructure sites, PSF supports scalable deployments from small compounds to multi-kilometer perimeters.

Typical Applications

- Power plants, substations, and transmission facilities
- Oil, gas, and petrochemical sites
- Warehouses, factories, logistics yards, and data centers
- High-security compounds, airports, correctional facilities, and utility sites

Key Features

- Non-lethal electric deterrence
- Up to 10 kV pulsed output with low current, compliant with international safety standards
- Effective psychological and physical barrier for cutting, climbing, and tampering attempts
- Multi-zone architecture
 - From 2 up to 50 independently monitored zones
 - Precise intrusion localization to the exact fence zone
 - Independent control and alarm handling per zone
- Operational continuity if cut or damaged
- Segmented circuit design with parallel-feed topology
- Fence remains operational on all healthy segments when one wire or section is cut
- Intelligent fault isolation in the controller, with alarms sent to monitoring software
- Earth wire supervision (high-security version)
 - Continuous monitoring of earth wires even when HV is off
 - Alarms for earth wire cut or earth-to-live short conditions
- Open integration
- RS-485 and TCP/IP communication
- Dry-contact alarm outputs for CCTV, lighting, sirens, access control, and I/O devices
- Seamless integration with Persec Perimeter Management Software

Number of zones	2 up to 50 independently monitored zones
Maximum output voltage	up to 10 kV (adjustable)
Voltage alarm threshold	100 V – 10 kV (variable)
Output energy	up to 2.5 Joules
Communication	RS-485, TCP/IP
Alarm outputs	Dry-contact alarm outputs for CCTV, lighting, sirens, access control, and I/O devices
Maximum Power	Joules 2.5

System Components

➤ PSF Controller

The PSF controllers are high-tech perimeter-security devices designed for strong protection, advanced safety, and reliable operation within international electrical-safety limits. They integrate seamlessly with third-party systems—including alarm panels, access control, and CCTV—through an open-architecture design. Available in single, dual, and six-zone configurations and housed in IP65 enclosures, they support both indoor and outdoor installation; when mounted near the fence line, no extra high-tension lead-out conduits are required. The system provides isolated alarm relays, a simple 12-V arm/disarm input, and fully supervised communication lines to ensure continuous operational integrity. Each energizer also includes a fully supervised isolation switch for safe maintenance.

- Dual-zone or multi-zone intelligent energizer/controller
- Generates HV pulses, processes intrusion events, and communicates alarms
- 8 alarm inputs + 8 alarm outputs (dry contact) for local integration
- Built-in surge protection and status indicators



➤ PSF Intermediate Section

Intermediate sections are used to support the Electro-Fence wires. They are not designed to take significant strain and should not be used where the fence changes direction by more than 20 degrees. The Electro-Fence posts are mounted onto the existing fence posts and extend above the original fence.

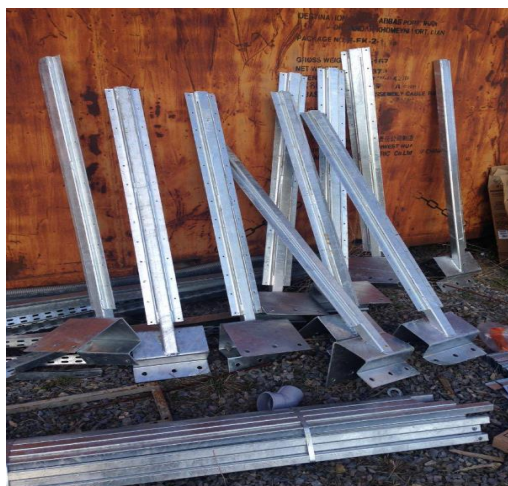
- Maintains conductor spacing between tension points
- Used on straight lines or small deviations ($\leq \sim 20^\circ$)



➤ PSF End Section

End sections are used to take the tension of the Electro-Fence wires at the beginning or end of a fence section. They are also used at internal or external corners of less than 90 degrees and where the fence height changes.

- Anchors and tensions fence wires at line starts/ends and height changes
- Supports internal/external corners $< 90^\circ$



➤ PSF Direction Change Section

Direction change sections are used where the fence wire changes direction by more than 20 degrees vertically or 90 degrees horizontally.

- For direction changes > 20° vertical or > 90° horizontal
- Maintains mechanical stability and electrical performance in sharp turns



Address: 151 Yonge Street, Suite 1500
Toronto, ON M5C 2W7
Canada

Tel: +1-416 371 2275

Website: www.persec.co

LinkedIn: www.linkedin.com/company/persec-technologies